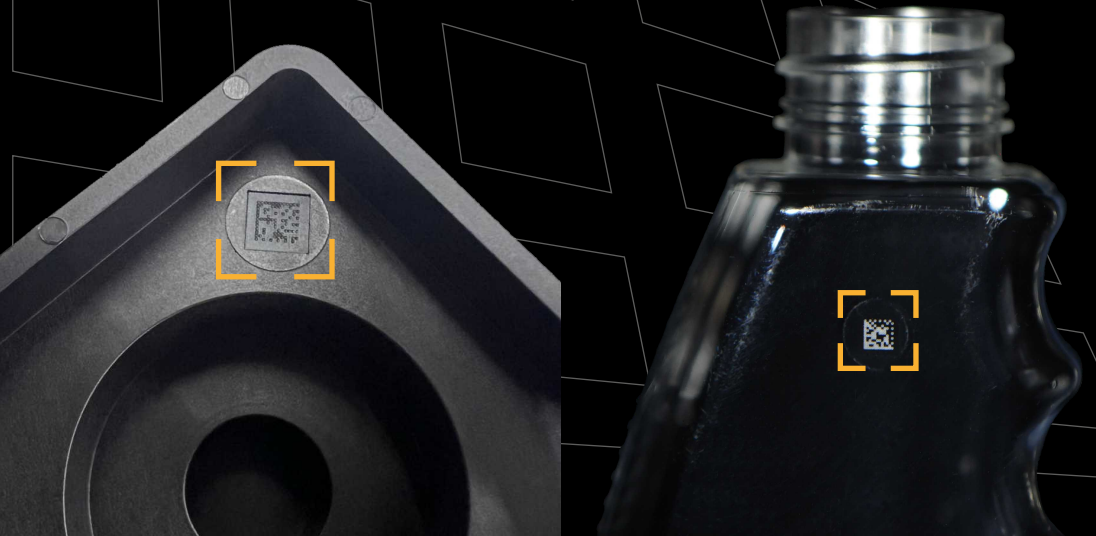


DM-qode

Imprinted Identity for Every Plastic Part

**Traceability
Quality & Trust**



every single part linked to its data

Imagine a solution that does not slow down your production, requires no additional automation, and conserves resources too.

A typical use case (picture): Components receive their individual Data Matrix Code directly inside the machine. The codes and the process data are bundled into a single data package by the machine and transmitted to your database in real-time. Through a simple camera scan, the component is identified and all relevant data is immediately displayed.



fast

marking in real-time - without slowing down the cycle time

autonomous

the technology operates autonomously and follows the process flow of the production

integrated

marking and production in one step - no detours, no complications

economical

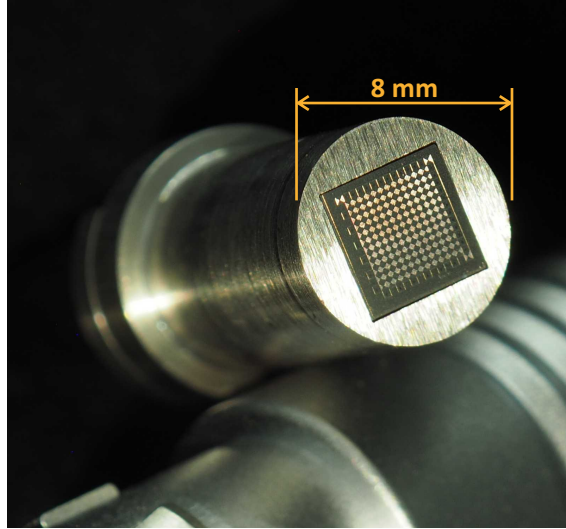
No external coding automation required – for significantly lower marking costs

forward-looking

a sustainable solution that does not require any additional materials

minimalist insert, maximum impact

The 144 micro-heaters on the insert emboss an individual Data Matrix code onto every part. This takes place during the manufacturing process. The integrated sensor handles the timing.



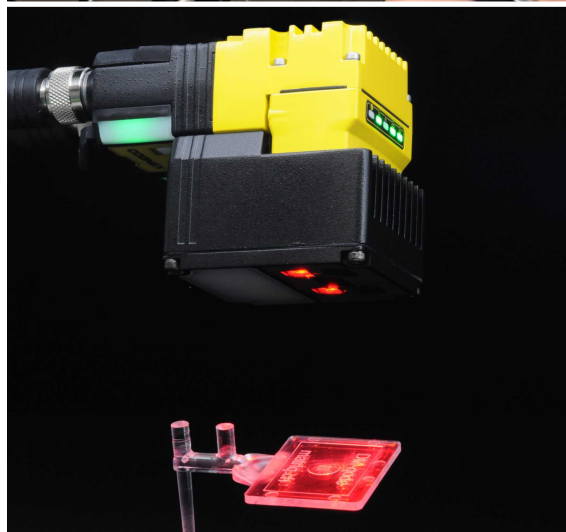
easy to install, quick to deploy

The mold inserts are inserted into openings in the cavity. The desired codes are delivered to the marking system either by the user on the touchscreen or automatically through an interface.



scan the part, retrieve the data

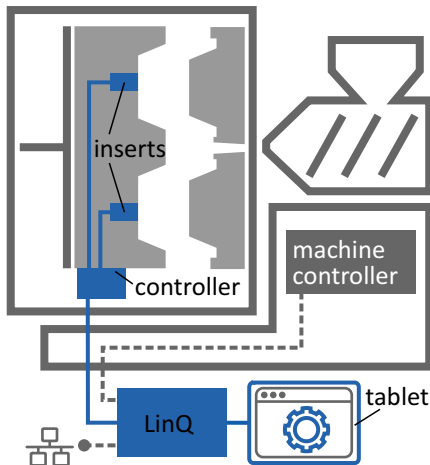
The codes are a durable engraving that is embedded into the surface of your component. They can be read at any time by commercially available DPM-capable code reader cameras.



technical data

code type	Data Matrix (ISO)
logical code size	12x12 (stores max. 10 digits)
process	injection molding, blow molding
plastic types	PP, PS, PC, ABS, PBT, PMMA, ... *
number of cavities	1 to 4 (one insert each)
machine integration	standalone operation or UPC UA
mold temperature	up to 100°C (212 °F)
internal mold pressure	up to 2000 bar (29'000 psi)
smalles cycle time	3 s
DynamicMold® insert size	∅ 8 mm x 20 mm (∅ 0.315" x 0.787")
version 11/2025	*further materials on request

machine integration



all parts at a glance



matriq AG
Lerchenfeldstr. 3
9014 St. Gallen
Switzerland



<https://matriq.ch>
contact@matriq.ch

