



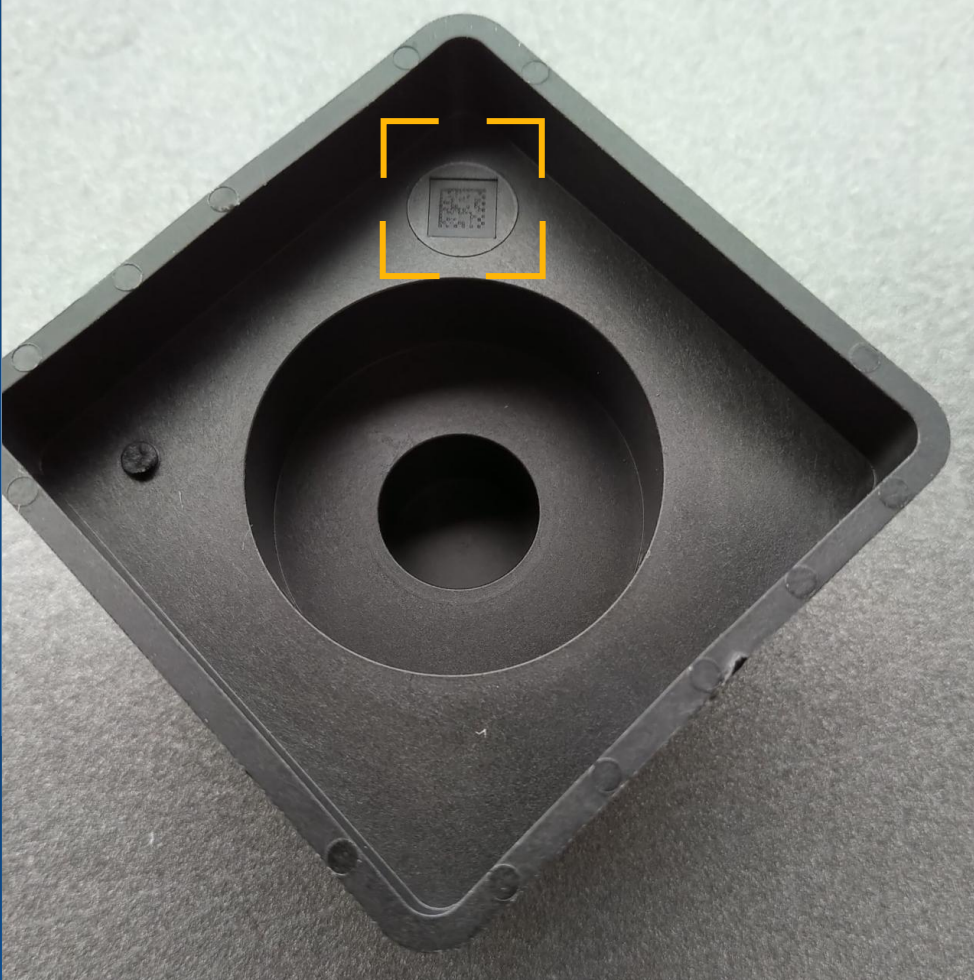
matriq
the plastics marking solution

marking plasti*q*
smart!

- serialization
- traceability
- brand protection
- industry 4.0

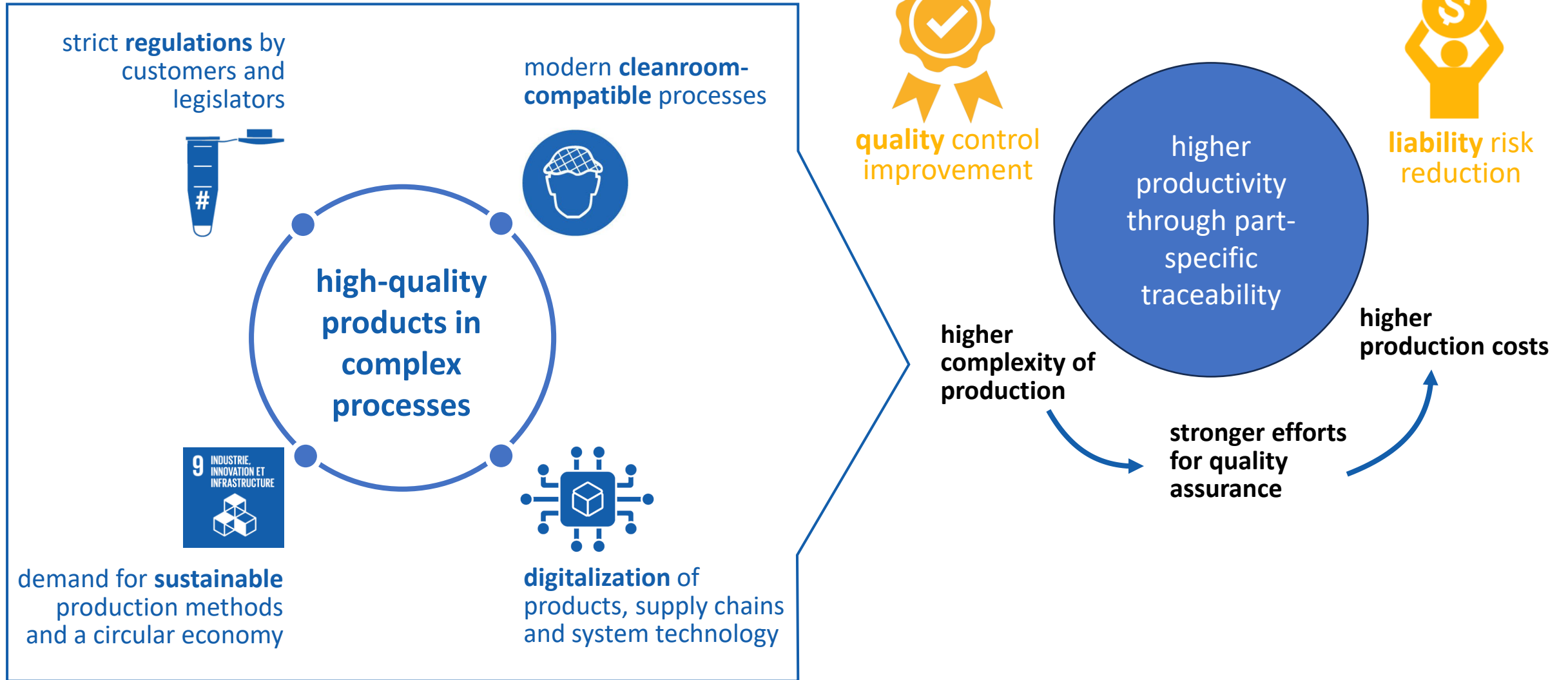
© matriq AG, February 2026
Lerchenfeldstrasse 3, 9014 St. Gallen, CH
contact@matriq.ch | +41-71-5714850

Each of your
components is
individual and
unique!
Give it an
identity!

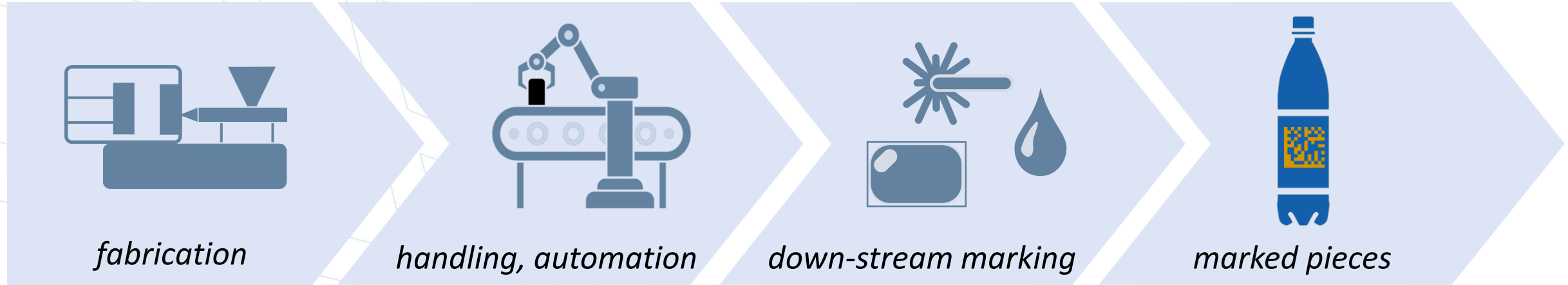


Component serialization for quality assurance and traceability.
For injection molding and blow molding.
From birth

challenges of our customers



the problem: today's marking is **costly and complex multistep process**

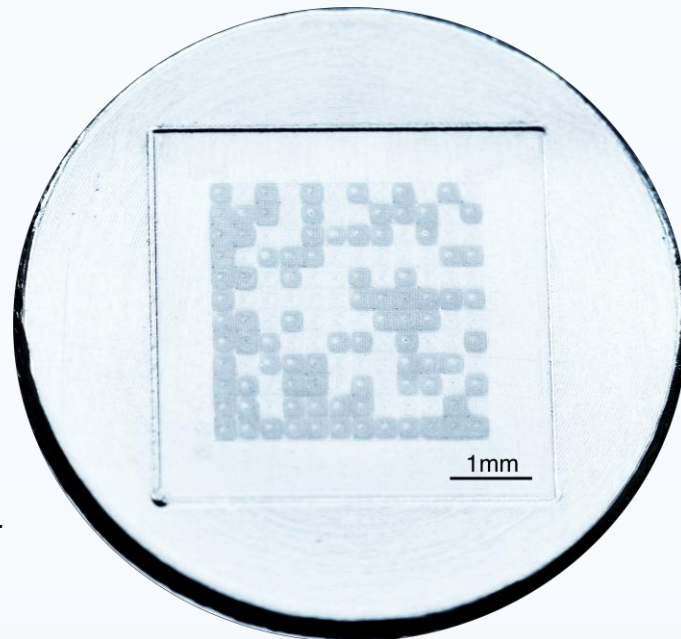


disruptive solution: marking and forming unified



The DM-qode

- serialization using 12x12 ISO DataMatrix code
- additive-free
- marking within the injection molding cycling time
- perfectly suited for clean-room production
- pressure stable up to 2000 bar
- hundred of thousands duty cycles

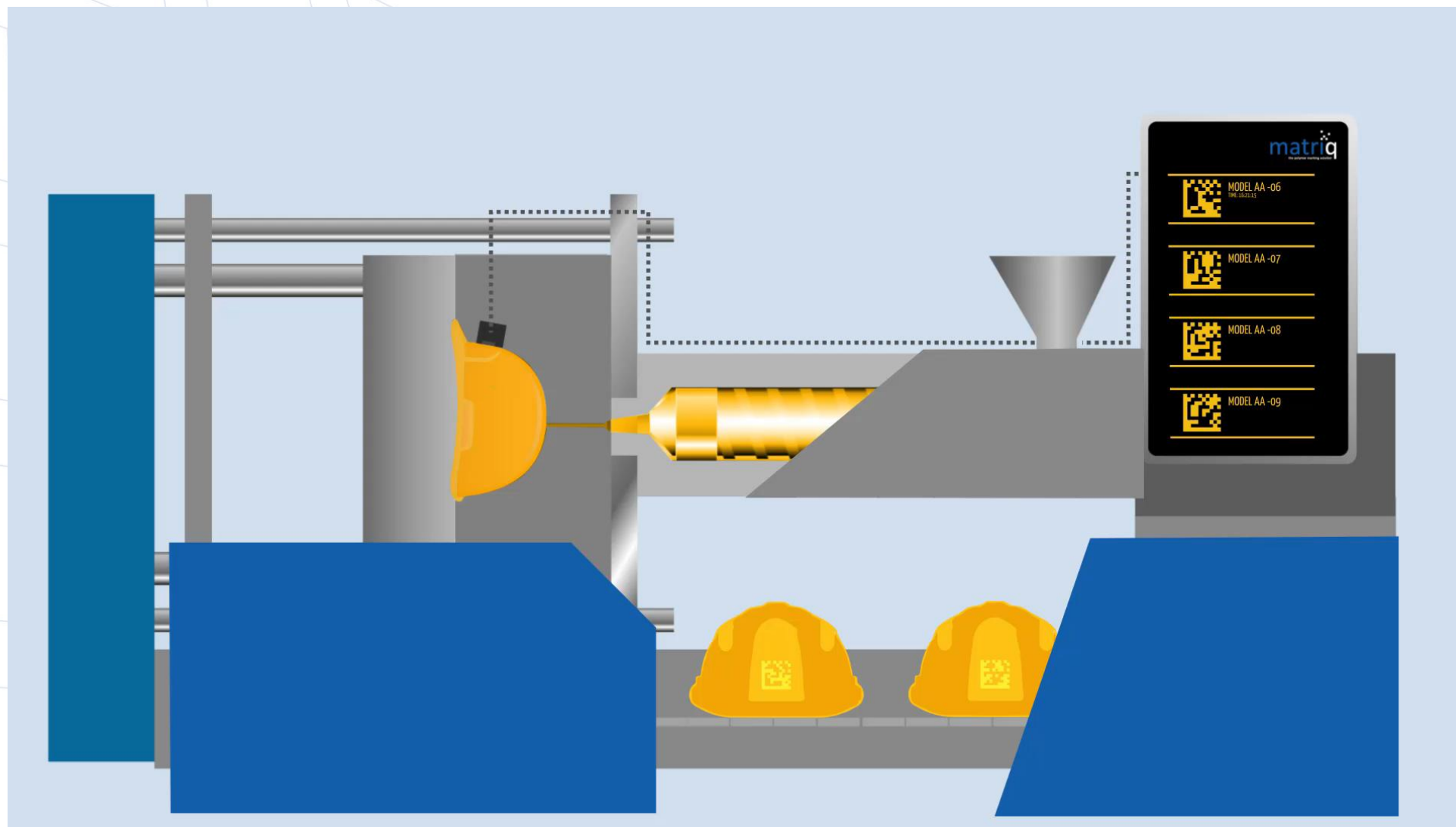


DPM code (direct part marking – based on ISO/IEC 29158:2020).



mold insert Ø 8 mm, length 20 mm

our solution: matriq variable marking in action



→ Animation here: youtu.be/C6bYhmjv7iU

DM-qode integration and system overview

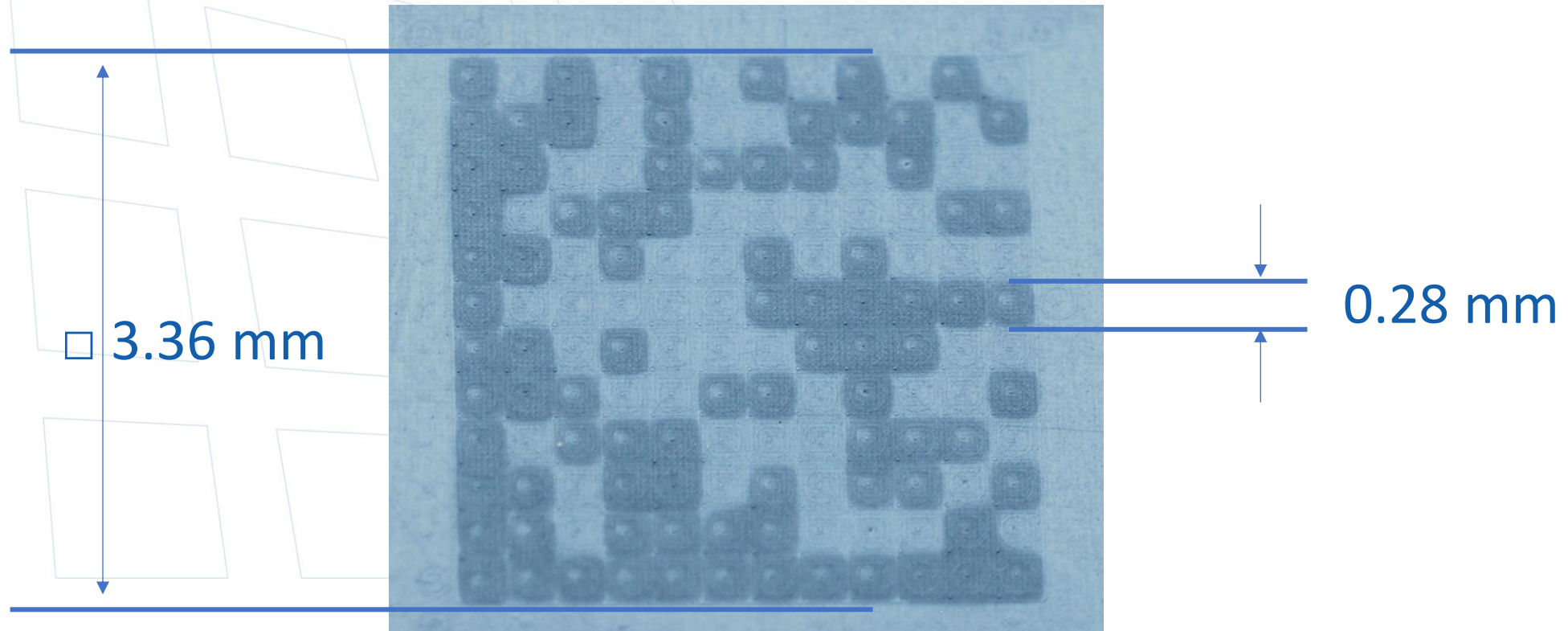


DataMatrix codes

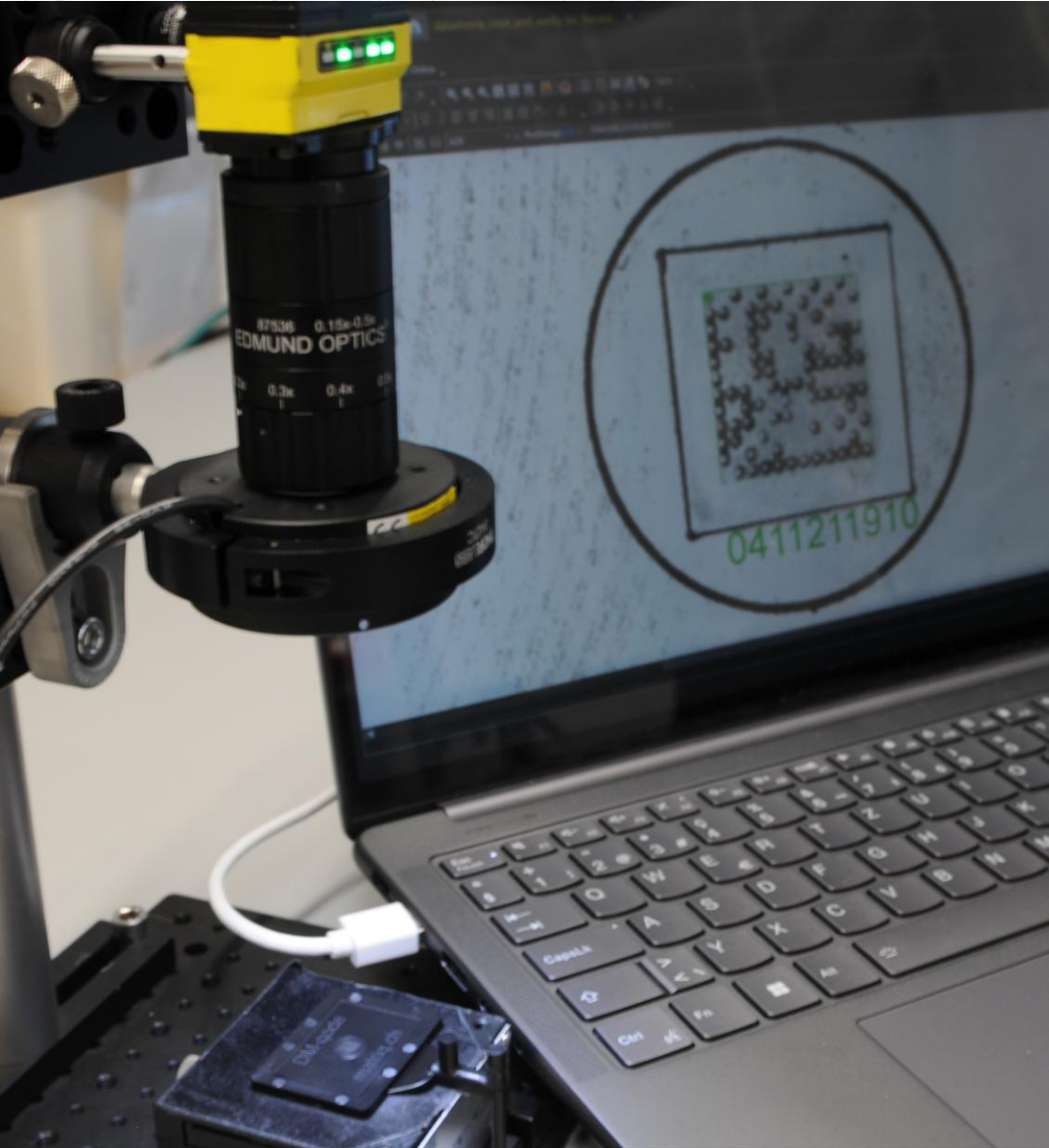
The DM-qode enables the application of a **144-pixel code in 12x12 DataMatrix** format

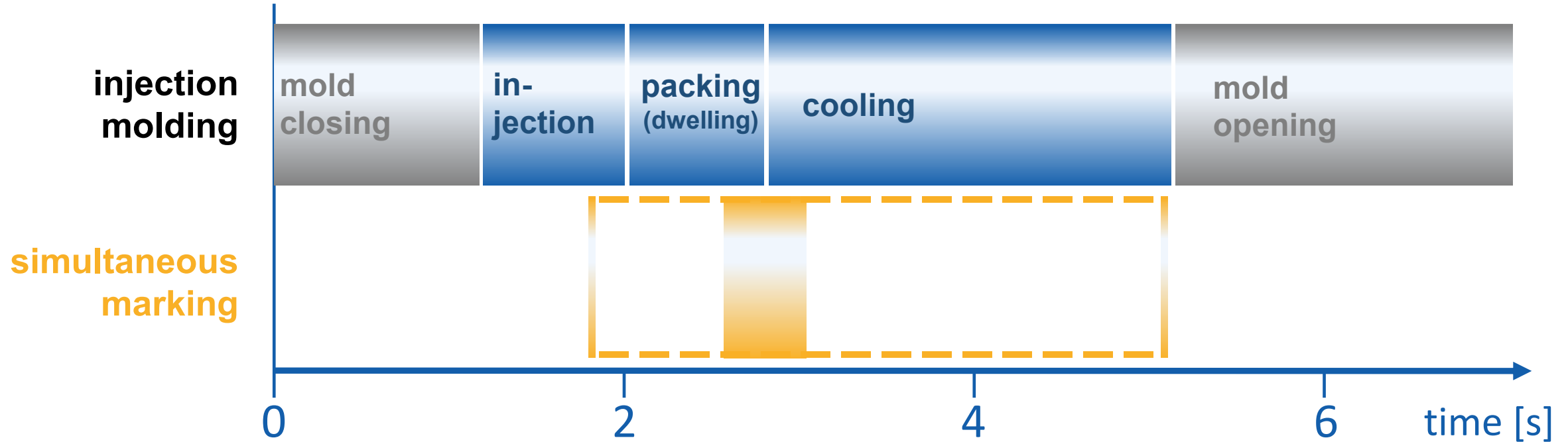
DataMatrix code	module size	data capacity numbers	data capacity text	version
12 x 12	0.28 mm	10 digits	6 characters	ECC 200

DCM based on the norms
ISO/IEC 16022:2006 and
ISO/IEC TR 24720:2008



code reading: standard camera and suitable illumination

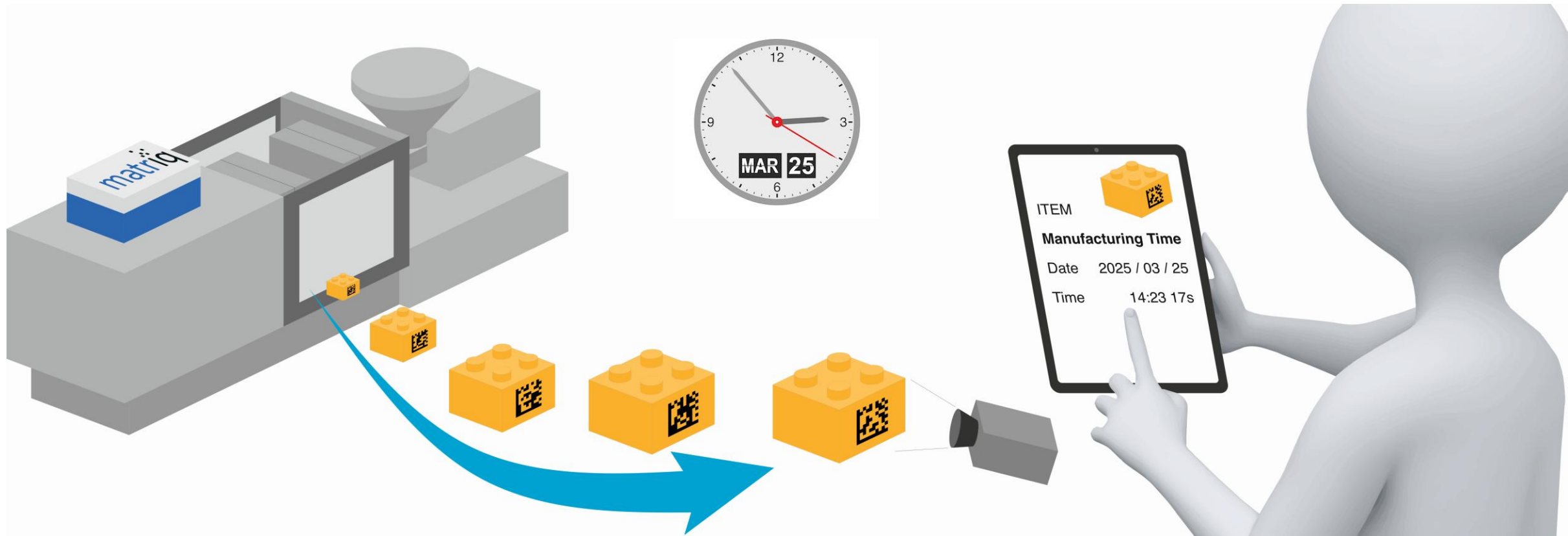




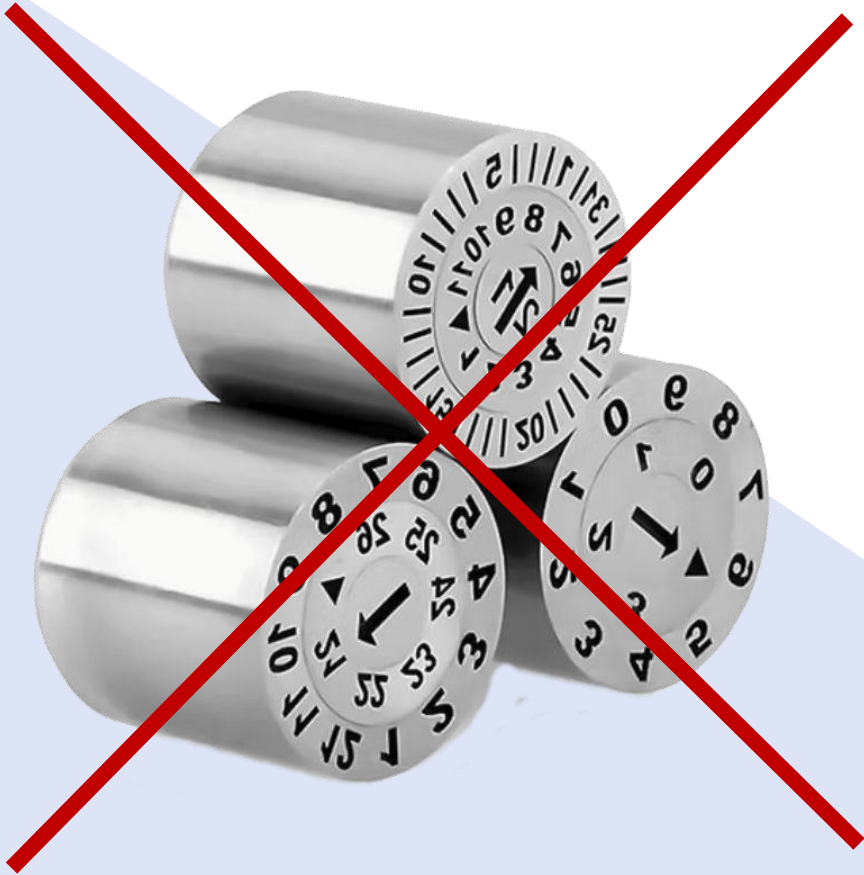
- no change of production cycle time
- detecting the mold front via the integrated temperature sensors → timing
- heating cycle depending on material, process, part geometry

connectivity and traceability: Time Stamp

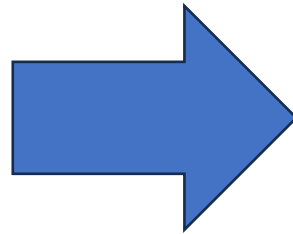
Serialization using Unix Time-Stamp: unique time stamp accurate to the second for each component, directly during the manufacturing process. This makes it easy to associate the shot ID without a network.



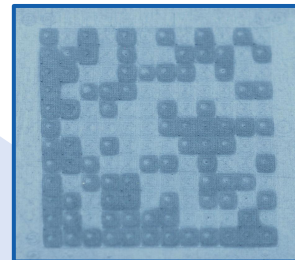
batch marking with year – month – day



- automatic, without intervention
- accurate to the **minute or second**
- independent of the machine
- digital



- manual
- unreliable
- analog
- machine stop necessary



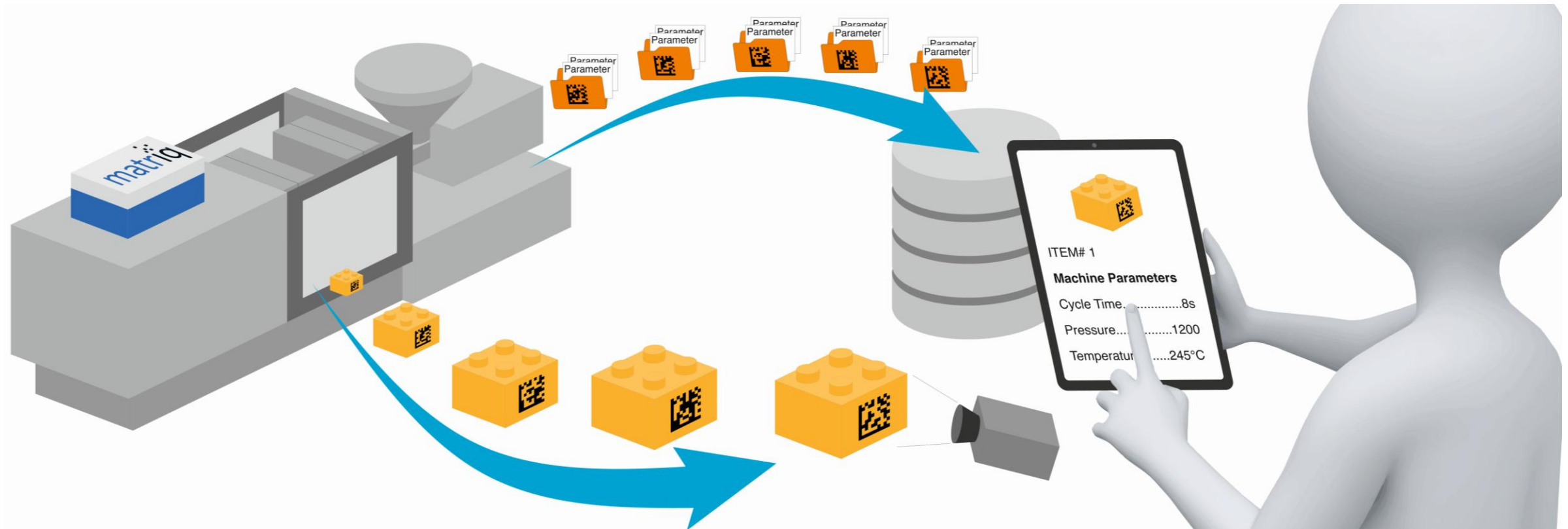
DM-qode



connectivity and traceability: serial number

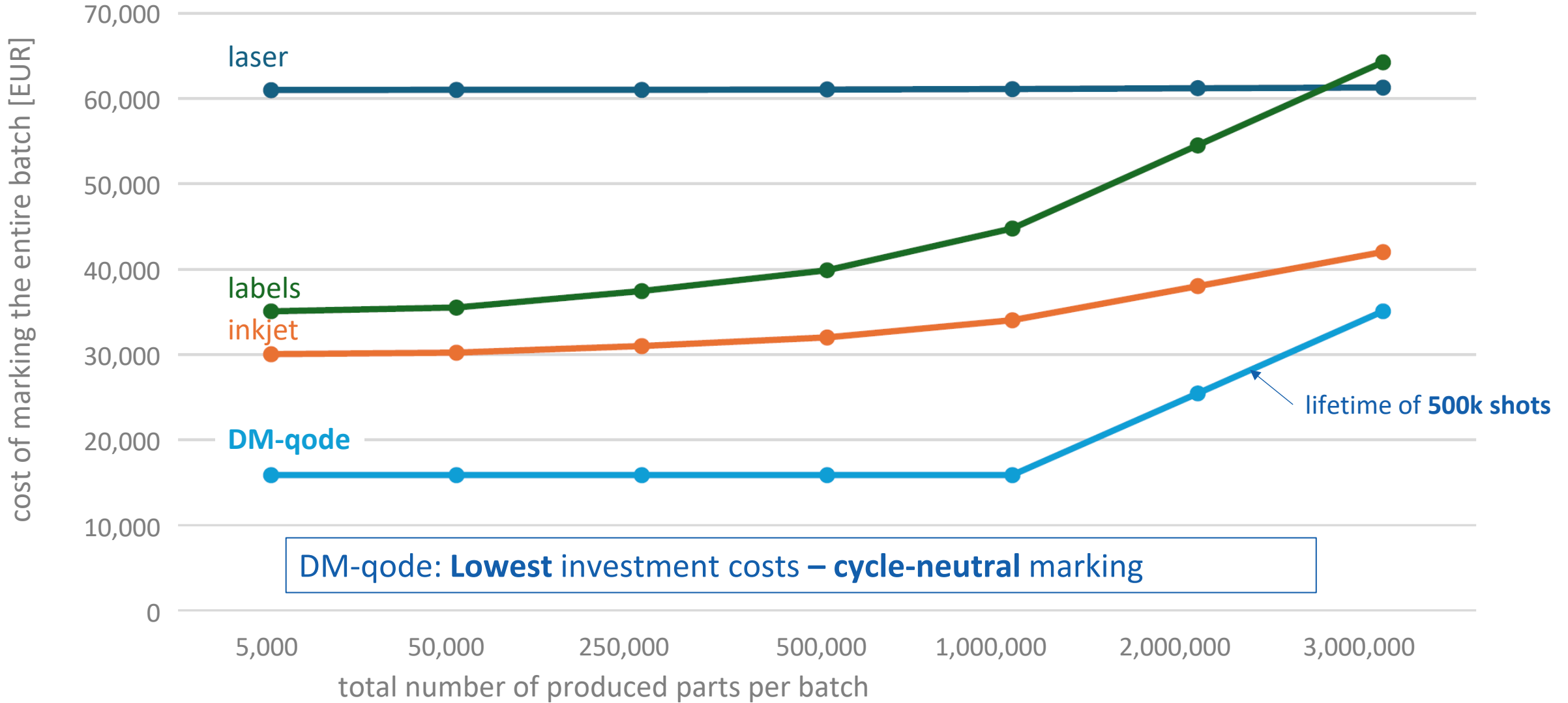
Serialization specified by the user for each component, cavity-specific; the DMC code is read by a camera and the corresponding stored data for each component can be retrieved.

In **later assembly and finishing steps**, the data can be expanded and added to the component data record (database, cloud).



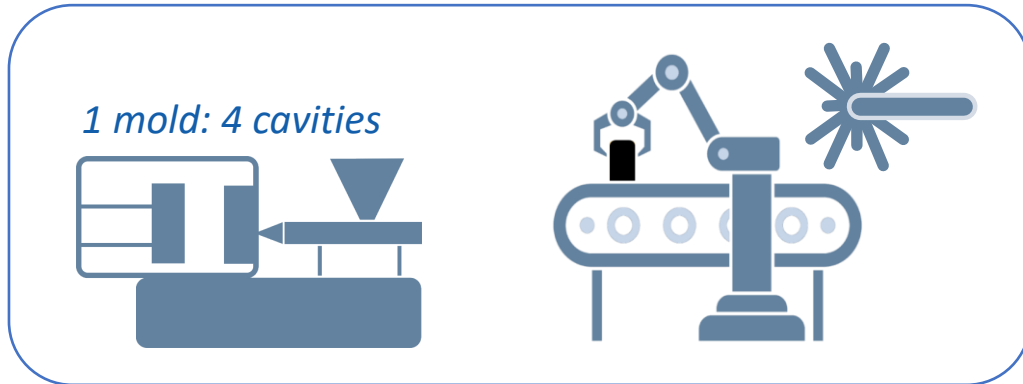
marking components in production: cost comparison

injection molding production with a 2-cavity tool of 5,000-3,000,000 parts



marking components in production: **laser vs. matriq**

situation and cost



marking system: laser EUR 60,000 – 90,000
specific automation: EUR 20,000 – 150,000



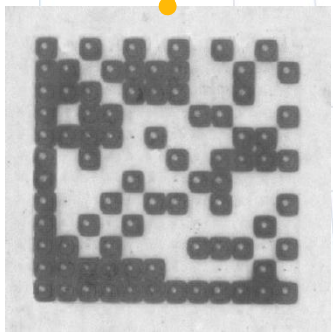
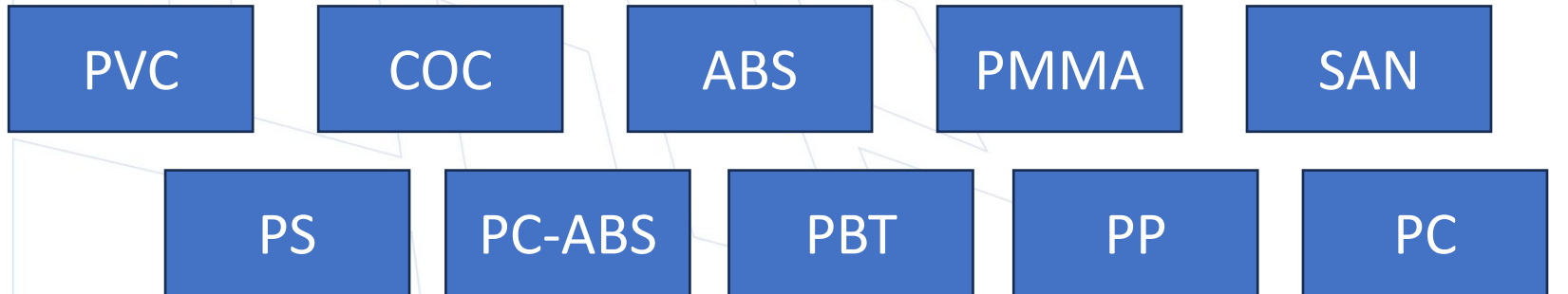
marking system: DM-qode EUR 23,000
specific automation: EUR 0

considerations and remarks

- producing & marking are **separate steps**
 - laser **safety** and ventilation required
 - higher space requirement for marking
 - marking can lead to longer cycle times
 - mold can only be mounted on **specific production lines**
 - lead time needed for setting up automation
-
- producing & marking **simultaneously, no cycle times**
 - **parts marking “at birth”, cavity-specific**
 - fast and simple integration into mold tool
 - **less space** in shop floor needed
 - **high flexibility** on production lines and molding machines

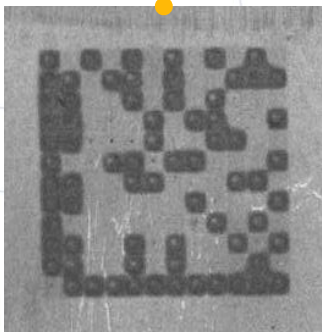
examples of DMC in various materials read by camera

process developed for injection molding



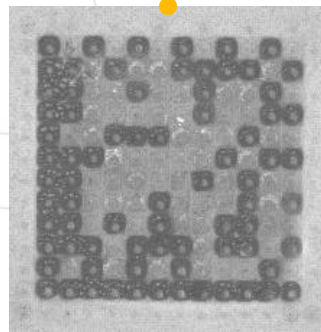
PS 486 M, transparent

3849619865



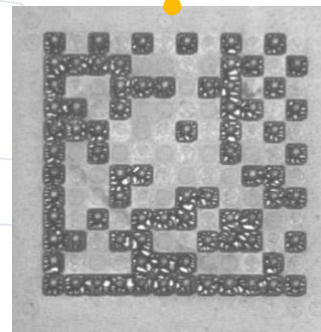
PC/ABS black

7034363516



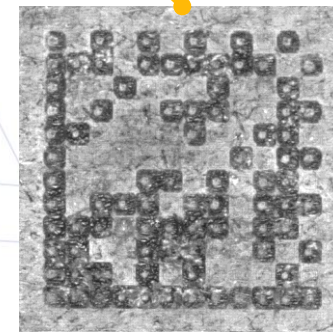
PBT black

1734825604



Bormed RF825 MO, natural

6075027395



WIC GF20 CF10, black

2472495623

process development pending

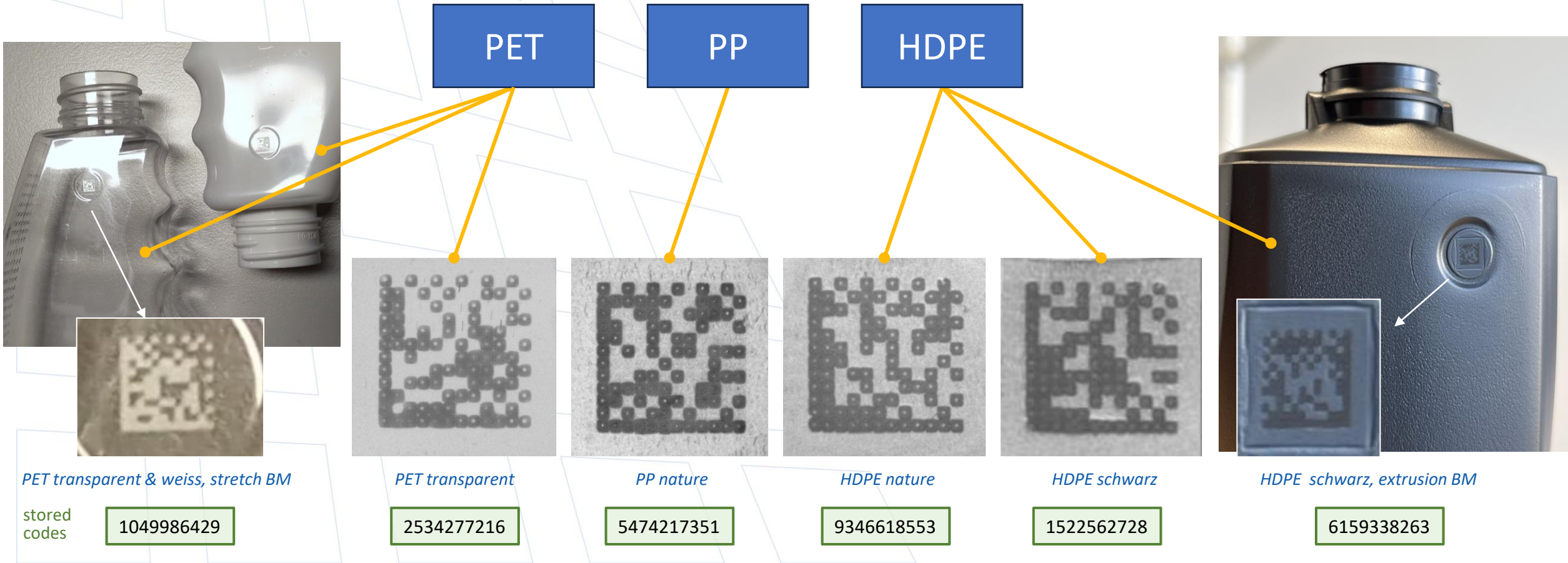


mold temp typically >100°C
→ too high for DM-qode



examples of DMC in various materials read by camera

process developed for **stretch and extrusion blow molding**



matrig in a nutshell

- 2026
●
↑

customer base in CH, DE, AT, FR, IT, CZ, and CA
further patents filed
- 2025
●

customer base in automotive, MedTech & industry
10 people working @ matrig
handshake to Kistler ComoNeo and Arburg machine
- Jun 2024
●

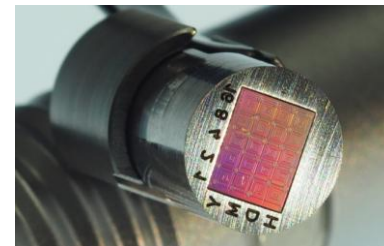
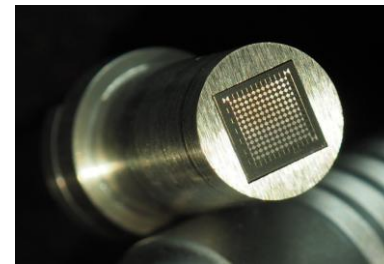
DM-qode 12x12 released: Data Matrix codes for serializing plastic components in injection molding
- Mar 2022
●

launch of **DM-date** (the digital time stamp, MVP)
first production plant implementations
- 2021
●

building the tech, setting up production,
talking to prospects, patents in EU, USA granted
- 2020
●

venture capital funding, **securing IP**,
building the company, awards & recognition
- Oct 2019
★

matrig incorporated in St. Gallen (CH)





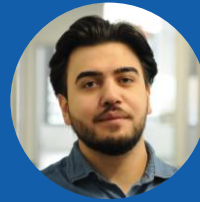
sales & customer support:



André Bernard



Anja Baumann




Can Sahin



Klaus Dietrich



Sameera Qurbani



matrig
the plastics marking solution

The plastic
marking solution!

matrig AG

Lerchenfeldstrasse 3, 9014 St. Gallen, CH

+41-71-571 4850

