



datasheet

DM-date

08/2020

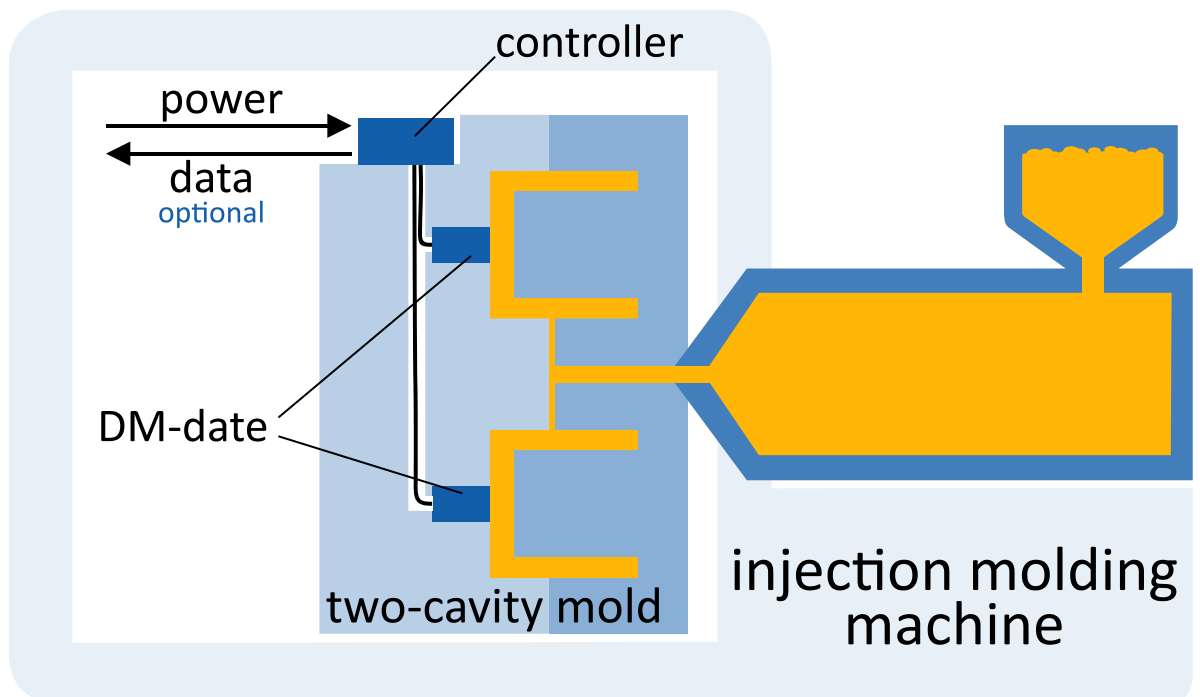


characteristics

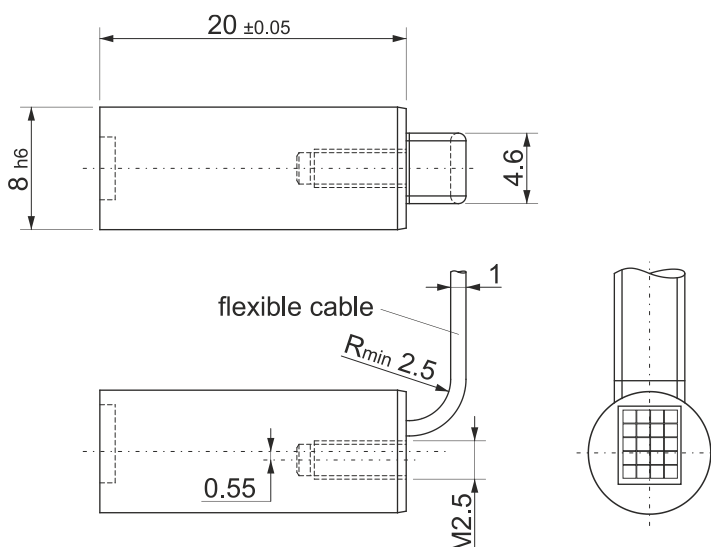
The DM-date is a digital date stamp for polymer shaping and reshaping processes. It's mounted directly inside the mold and connected to a controller, located at the edge of the mold. Three versions are available with selectable precision of the date or with single piece serial numbering capabilities.



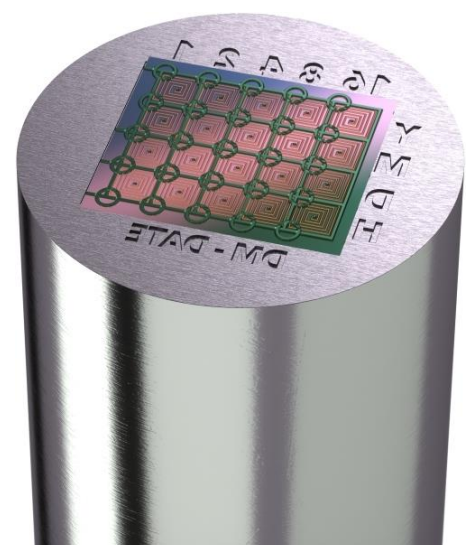
typical application



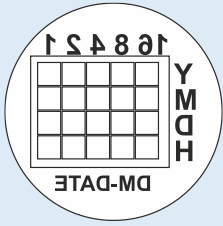
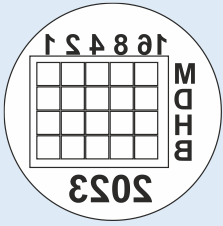
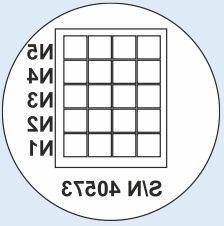
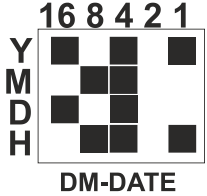
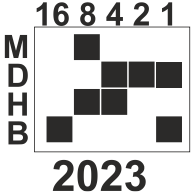
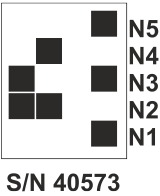
drawing



product image



versions

	DM-date-h	DM-date-m	DM-mate
mold insert front surface			
precision	1 hour	2 minutes	single piece
value range	2000-01-01 00:00 2031-12-31 23:00	20XX-01-01 00:00 20XX-12-31 23:58	00001h = 1 FFFFFh = 1'048'575
sample imprint	 DM-DATE	 2023	 S/N 40573
sample data	2021-12-20 13:00	2023-08-07 12:34	149C1h = 84'417 stamp s/n 40573

technical data

version	DM-date-h DM-date-m DM-mate
suitable polymers	amorphous, non-filled polymers others on request
suitable process	injection molding blow molding thermo forming
suitable machines	machine independent
trigger	self-triggering (internal temperature sensor)
max. mold temperature	150°C
max. molding material temperature	>400°C
min. cycle time	1s
format date / time / serial	binary
cable length [mm]	500
controller dimension [mm]	100 x 100 x 50
power	24V, 100W peak

disclaimer

ALL PRODUCT, PRODUCT SPECIFICATIONS AND DATA ARE SUBJECT TO CHANGE WITHOUT NOTICE TO IMPROVE RELIABILITY, FUNCTION OR DESIGN OR OTHERWISE.